

Ashton

Three bedroom house

INNOVATION • QUALITY • SUSTAINABILITY



Solar panels

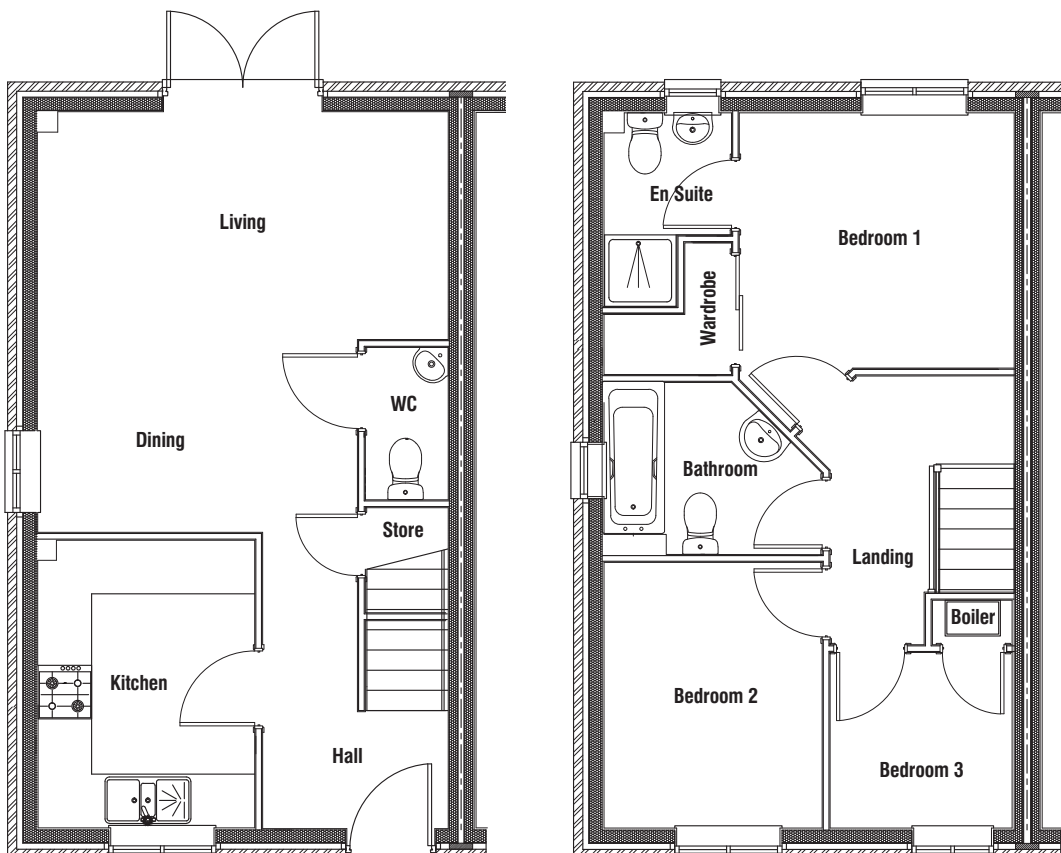
Solar photovoltaic (PV) panels are fitted as standard on selected Larkfleet properties. Please ask your sales advisor to confirm if solar panels are fitted to the property on the plot number you are interested in.

Plot numbers

Please refer to the development brochure for confirmation of the plot numbers for this particular house type.

All house type images are for illustrative purposes only and the final building detailing and finishes may vary slightly from what is shown.

Please see our sales advisors for full site specific details.



Ground floor

Living/Dining Room 4.58m x 4.68m
15'0" x 15'4"

Kitchen 2.41m x 3.20m
7'11" x 10'6"

First floor

Bedroom 1 2.98m x 2.84m
9'9" x 9'4"

En Suite 1.49m x 2.15m (max)
4'11" x 7'1"

Bedroom 2 2.43m x 2.96m
8'0" x 9'9"

Bedroom 3 2.04m x 1.95m
6'8" x 6'5"

Bathroom 2.43m x 1.90m
8'0" x 6'3"

All measurements shown are approximate maximum room dimensions.

Depending on plot number, the floor plans for this house type may be opposite to those shown above.

Every care has been taken to ensure the accuracy of these particulars but the contents shall not form part of any contract and the vendors reserve the right to alter specification and/or design without notice. Landscaping shown is for illustration purposes only.